

Riverland Self Drive History Tour

Come on, discover the Riverland's vibrant history!



Discover the Riverland's historical sites

LOXTON <ul style="list-style-type: none">The Village1956 Flood Exhibition"The Pines" Loxton's Historic House and GardenLoxton's Pepper TreeEast Terrace, LoxtonSturt Memorial & LookoutTree of Knowledge	COBDOGLA <ul style="list-style-type: none">Cobdogla Steam & Irrigation Museum WAIKERIE <ul style="list-style-type: none">Waikerie RSL & War MuseumWaikerie Pioneer MuseumWaikerie Heritage WalkWaikerie Toy MuseumWaikerie Machinery Museum BARMERA/ LOVEDAY <ul style="list-style-type: none">Lake BonneyNapper's Bridge and RuinsBarmera War MemorialBarmera Town ClockLoveday Internment CampThe Bluebird MonumentBarmera Heritage Walk	RENMARK <ul style="list-style-type: none">Argo BargeP.S. IndustryOlivewood Historic Homestead & MuseumRenmark Paringa Community MuseumParinga Bridge BERRI <ul style="list-style-type: none">History Walk of Berri
---	---	--

Disclaimer: Created by The Village, historic Loxton. Information in this brochure is a guide only & was considered by The Village to be correct at the time of publication, April 2016. Details and services are subject to change without notice. Entry fees may apply at some venues. Please contact individual venues for opening times, fees and information.

Riverland Self Drive History Tour

Celebrating South Australia's History Festival



THE VILLAGE, HISTORIC LOXTON

Leave the 21st century behind and travel back to when the first pioneering families arrived in the region during the mid-1800s. See how farmers battled heat, drought and rabbit plagues and how dry Mallee plains were transformed into lush citrus orchards. The everyday lives of the early settlers and their families are depicted in over 45 buildings and exhibits in The Village. See how they lived, where they shopped and banked, and the school their children attended. Open Tuesday—Sunday 10am to 2pm (Closed Christmas Day and Good Friday) PH: 8584 7194. Allen Hosking Dr, Loxton. www.thevillageloxton.com.au

THE 1956 MURRAY RIVER FLOOD EXHIBITION

Located within The Village, Loxton. View the amazing collection of photographs from all over the Riverland showing the destruction and heart break left as the waters of the River Murray rose by a mammoth height in between May 1956 and January 1957. Loxton river levels rose by 7.42m. The Village, Allen Hosking Drive, Loxton. Village entry fees apply.



'THE PINES' HISTORIC HOUSE AND GARDENS

Built in 1909, this historic sandstone villa and its contents were bequeathed to the people of Loxton for display and entertainment purposes by former owner, Mrs Ella Kingdon. Sited on 2,000 square metres of beautiful gardens, the contents of the house represent a snapshot of the lifestyle of one of Loxton's pioneering families. 'The Pines' is proudly maintained by enthusiastic volunteers and is open every Sunday afternoon at 2pm for guided tours. 18 Henry Street Loxton. PH: 8584 7785 or 8584 5187 Email: info@thepinesloxtion.com



EAST TERRACE, LOXTON

The Rotunda in the centre of Loxton's vibrant shopping precinct, was built to remember the soldiers who lost their lives in World Wars I and II as well as Korea, Malaya, Borneo and Vietnam. More information can be found in the publication "History Walk of Loxton" available at the Loxton Visitor Information Centre. PH: 8584 8071.



STURT MEMORIAL AND LOOKOUT

Captain Sturt and his heroic crew rowed their 27 foot whale boat past this point on January 30th 1830 during their Murray River exploration. This large memorial at the end of East Terrace, Loxton overlooks the river and town wharf. Loxton Visitor Information Centre. PH: 8584 8071.



TREE OF KNOWLEDGE

View at a glance how severely a high river can affect this region. By studying the high river levels on the trunk of this magnificent old river red gum, you can begin to understand the cycles and impact of the Murray River system. Lions Park, Grant Schubert Dr, Loxton.



LOXTON'S PEPPER TREE

There are many stories regarding the famous Pepper Tree. Renown for its connection to William Charles Loxton who occupied a hut in close proximity to where the Pepper Tree stands. Located on the exterior boundary of The Village, Loxton. Allen Hosking Drive, Loxton.



KINGSTON BRIDGE LOOKOUT

One of Australia's greatest explorers, Captain Charles Sturt passed here on his Murray River expedition of 1830. The lookout that marks the spot offers good scenic views of the Murray River and backwaters. Sturt Hwy, Kingston on Murray.



MORGAN MUSEUM

Take a walk around Morgan, a town rich in river history. Founded in 1878, Morgan was one of the busiest inland waterway ports. The Morgan Museum comprises three separate buildings filled with items of memorabilia. Superb horse drawn and vintage vehicles are on display along with the old telephone exchange, a school room and farmhouse kitchen. Railway Terrace, Morgan. Contact the Morgan Information and Resource Centre for more information. 4th Street Morgan. PH: 8540 2643



WAIKERIE RSL CLUB AND WAR MUSEUM

The museum is housed within the premises of the Waikerie RSL sub branch containing many items relating to local South Australians who fought in both World War I and II as well as the Vietnam War. Collections include uniforms, firearms, medals, photographs and other wartime memorabilia. There is also a library of books, videos and tapes available for loan and a bar for refreshments. Open Mon, Wed, Thurs, Fri 2pm – 6pm and other times by arrangement. PH: 8541 3988. 10 Thompson Street, Waikerie. Email: waikrsl@iinet.net.au



WAIKERIE HERITAGE WALK

Take in the history with this town walk, featuring the original Town Institute and Horse Trough. Available from the Waikerie Visitor Information Centre, Sturt Highway Waikerie. PH: 8541 2332

Riverland Self Drive History Tour

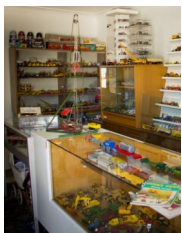
Celebrating South Australia's
History Festival 2016



WAIKERIE PIONEER MUSEUM

The National Trust's Pioneer Museum nestled amongst a lovely grove of native pines in Doris Odgers Park. Located 5km from the town centre off Virgo Road it is surrounded by the very fruit blocks that are the reason for Waikerie's existence. The Pioneer Museum houses clothing, household items, furniture, tools and machinery that reflect the everyday lifestyle of the early pioneers of the district. Browse through the museum exhibits then take a short stroll through the pines to the Hill Top Viewing Area. The Museum hosts regular open days and is open to individuals, tours and groups by arrangement (minimum donation applies). Virgo Road, Waikerie.

For bookings contact Mike & Joy Perry PH: 8541 2260 or Chris & Louisa Christiansen PH: 8541 2831.



WAIKERIE TOY MUSEUM

View toys dating back to the early 1900s. Dolls, tin, dinky, lesney, and collectable toys. Tricycles and scooters available for use by children as well as a sand pit and Tonka toys. Something of interest for all ages. Gold coin donations appreciated. Open by appointment only: 0429 990 336 89 Holder Top Road, Waikerie.



WAIKERIE MACHINERY MUSEUM

Open by appointment this venue has on display Stationery engines, vintage tractors, farm machinery and equipment used in a bygone era.

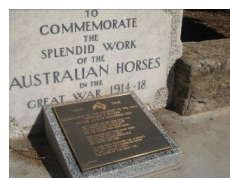
Located on Rowe street next to the Waikerie Ferry and pumping station. Contact Erica: 8541 3767, John: 0438 412 826, Rex: 0419 848 213 or Leon: 8541 2659.



NAPPER'S BRIDGE & NAPPERS RUINS

Napper's Bridge, at the junction of Chambers Creek and Lake Bonney, was originally built incorporating a weir in 1914 by our early settlers during drought conditions. Napper's

Ruins, a little further north, are of the Lake Bonney Hotel originally built for workers of Cobdogla Station, and an accommodation house built in 1859 which housed Overlanders who traversed this great country in the early 1900s. Interpretive information is available at the ruins. Barmera Visitor Information Centre. PH: 8588 2289. Barwell Avenue, Barmera. www.barmeratourism.com.au



BARMERA WAR MEMORIAL

Such was the use of horses on the Western Front that over 8 million died on all sides fighting in the war. Two and a half million horses were treated in veterinary hospitals with about two million being sufficiently cured that

they would return to duty. Horses were heavily used in World War I and were involved in the war's first military conflict involving Great Britain. A Memorial to commemorate the work of the Australian War Horses is placed in the gardens at the top of Barwell Ave. Barmera Visitor Information Centre, Barwell Avenue, Barmera. www.barmeratourism.com.au PH: 8588 2289.



LAKE BONNEY

Lake Bonney, a natural fresh water lake fed from the River Murray via Chambers Creek, was first seen by Europeans in 1838 by Joseph Hawdon and his fellow drover, Charles Bonney, while herding some 300 cattle along the banks of the Murray from Howlong near Albury, to the recently established settlement of Adelaide. Following the discovery Lake Bonney became a sought after destination as the Overlanders, whilst using "Stoney Pinch Track", stopped to water stock en route between Ral Ral and Wentworth. The Lake has a surface area of 1,687 hectares, holds approximately 59,000 mega litres and is up to 8 metres at its deepest point. Barmera Visitor Information Centre. PH: 8588 2289

www.barmeratourism.com.au



BARMERA TOWN CLOCK

The Clock Tower is a memorial to Captain Charles Sturt who camped on the shores of Lake Bonney from 30th of August until the 3rd of September 1844, during his

overland search for the in-land sea. The tower was built on the centenary of his visit.



LOVEDAY INTERNMENT CAMP

In 1939 when England declared war on Germany, Australia joined the other Commonwealth countries in sending armed forces to the aid of King and Country. When Italy joined

the AXIS, German and Italian civilians throughout the UK were arrested for security purposes, and with invasion of Great Britain imminent, they were shipped to Canada and Australia where they were incarcerated with their fellow country men. After Japan entered the war, Japanese civilians were detained across Australia and throughout the Pacific. Approximately 2,000 Japanese men were interned at Camp 14 at Loveday. They joined the Germans and Italians already behind wire in Camps 9 and 10. It was the largest group of internment camps in Australia, and was designed to hold 6,000 internees, while over 1500 army personnel were based there. Group Commandant Lt Col Dean introduced the payment of one shilling a day to any internees who were prepared to work, and supervised cultivation of 440 acres, which was planted up to vegetables for consumption and for seed which was distributed around the nation. Juice from the tomatoes was canned and sent to the allies in the Pacific, while the opium poppies supplied raw opium for morphine and pyrethrum daisies were used for insect repellent. Pigs were bred for market and the poultry farm supplied dressed hens and eggs for the army hospitals and army camps. Work gangs carried out maintenance on roads, repaired army tents, and made soap, while the wood camps provided timber for the army. After the war Camp 14 was used as a transit station for POWs waiting to be shipped home. It closed in 1946. More information on tours and displays can be located at the Barmera Visitor Information Centre. PH: 8588 2289

Riverland Self Drive History Tour

Celebrating South Australia's
History Festival 2016



THE BLUEBIRD MONUMENT

More recent history was made in 1964 when world renowned Donald Campbell and his dedicated team attempted to break the World Water Speed record, reaching an Australian Water Speed Record of 216mph (475 km per hour). Campbell later succeeded with a World Water Speed record (276.33mph/607.93kph) in Western Australia and remains to this day the only person to achieve both Land and Water World Speed Record in the same calendar year. A monument to Donald Campbell and a representative model of the Bluebird K7 can be found on the foreshore of Lake Bonney. More information is available at the Barmera Visitor Information Centre, Barwell Ave, Barmera. PH: 8588 2289. www.barmeratourism.com.au



BARMERA HERITAGE WALK

This walk is approximately 4.5km long and includes a stroll through the foundations of Barmera discovering the struggles and triumphs of the towns early settlers. Available at the Barmera Visitor Information Centre. PH: 8588 2289 www.barmeratourism.com.au



COBDOGLA IRRIGATION AND STEAM MUSEUM

A site littered with history and heritage, the museum features a Humphrey Pump. With the focus being on early irrigation history and steam powered engineering principles. There is also a 1908 Bagnall Steam Train offering rides through the extensive landscaped grounds on open days. Incorporated are dioramas depicting the regions development from pre-white settlement through the early years. Tours and diesel train rides can be arranged.

www.cobdoglasteammuseum.com.au
enquiries@cobdoglasteammuseum.com.au



HISTORIC OVERLAND CORNER HOTEL

Situated beside the Murray River this hotel has survived floods and ruin. This local icon was originally built in 1859 by the Brand Brothers. Owned by the National Trust this building incorporates a museum relating back to the days of the Overlanders. Visit and learn the stories behind the many ghosts of Overland Corner. Open for lunch Tuesday to Sunday from noon and dinner Friday to Saturday from 6pm-8pm (Tuesday and Thursday evenings by appointment. Minimum of 10 people). 205 Old Coach Road, Overland Corner. PH:8588 7021

www.overlandcornerhotel.com.au



HISTORY WALK OF BERRI-"STEP BACK IN TIME IN BERRI"

Available from the Berri Visitor Information Centre Riverview Drive, Berri PH: 8582 5511 This walk features

- A Special Place for Jimmy James
- Berri Bridge Mural
- Berri Ferry Landing
- Post World War II Veterans Memorial
- Captain Charles Sturt & River Boat Trail



RENMARK PARINGA COMMUNITY MUSEUM

Old time farm machinery, come and see the implements of yesteryear, bringing history back to life. The museum is available for use by the community for picnics and BBQs. Spend a little time here, you will be glad that you did. Open: Monday, Tuesday, Wednesday and Friday 9am—2pm Saturdays 9am-12noon. Sturt HWY, Paringa. PH: 0423 050 732.



ARGO BARGE

Renowned as the largest barge to operate on the Murray River system, the Argo was used mainly to pump water into or out of the main river. In the 1920s, the Argo

Barge was employed in the construction of the locks, weirs and barrages. Open for inspection Monday to Friday 9am to 4:30pm and Weekends & Public Holidays 10am to 1:30pm. 84 Murray Avenue, Renmark. PH:8580 3060



P.S. INDUSTRY

Built at Goolwa S.A, the *P.S. Industry* was commissioned as a work boat for the S.A Engineering & Water Supply Department in January 1911. The *P.S. Industry*

played a major role in keeping the river open to traffic, as it removed snags and later assisted to construct locks and weirs. Retiring in 1969 it became a floating static museum until the formation of a volunteer group in 1990. Due to the fantastic volunteers, it steams at regular times throughout the year and is moored on the Renmark riverfront. For further information and cruising details please contact the Renmark Paringa Visitor Information Centre. 84 Murray Avenue, Renmark.

PH: 08 8580 3060 www.visitrenmark.com



OLIVEWOOD HISTORIC HOMESTEAD AND MUSEUM

Irrigation was pioneered at Renmark by the Chaffey Bros. in 1887. Olivewood Estate is comprised of orange orchards, olive groves and four museum

buildings, one of which is the native pine log cabin style home of Charles Chaffey and family completed in 1889. View horse drawn vehicles and implements, large collection of photos and plant associated with the fruit industry. Morning and afternoon tea by arrangement. Open Thurs-Mon 10am-4pm, Tues 2pm-4pm. Closed on Wednesdays. PH:8586 6175. Email: olivewood.renmark@gmail.com



PARINGA BRIDGE

Opened in January 1927 & allowing the passage of river boats. Designed for both road and rail traffic, the historic lift-span bridge and associated railway have played an important role in facilitating local communications in the area in times of flooding.